



Boys and Girls Club of Clifton



Kinderkare

181 Colfax Avenue
Clifton, NJ 07013

Tel: 973-773-2697 Ext. 143

www.bgcclifton.org

Hours: Monday through Friday
3:00PM to 6:00PM

For Children attending
Kindergarten



Transportation:

We provide daily transportation from your child's school to our facility.

Transportation is also provided when public schools have a half-day session.

Daily Activities:

Circle time, music, story time, academics, indoor/outdoor play, learning centers, art, Smartboard & iPad interaction



Snack:

We provide 100% fruit juice, water, crackers, string cheese, and cereal for snack.

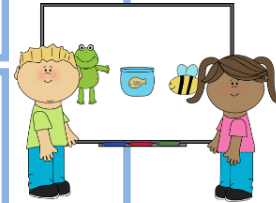
Important Information:

- During public school scheduled closings we are usually open from 8:00 AM - 6:00 PM.
- When public schools have a half day, transportation will also be provided.
- Pizza may be purchased for lunch. Lunch must be paid the day prior.

Tuition:

\$225 a month plus a \$40 yearly membership to the Boys and Girls Club of Clifton

- Tuition is due the first of every month with a grace period of five working days
 - **Cash-** Please hand money to a teacher and wait while the money is counted. **DO NOT SEND MONEY IN WITH YOUR CHILD!**
 - **Check-** Make checks payable to the Boys and Girls Club of Clifton. Please write child's name in the memo space.
 - **Credit/Debit Card-** Pay in the Early Childhood Office
 - **4C's Program-** It is your responsibility to swipe your child in and out every day, with the card 4C's provides you, in the Early Childhood Office. Failure to do so will result in a \$5 fee per day. Unfortunately, your child will not be allowed to attend school until payment is received.



Income Eligibility:

For reduced rate fee you must provide us with the following information:

- Completed Kinderkare Application
- Copy of previous year Income Tax Return
- Welfare Pink Slip or Medicare Card

Without this information, we cannot consider your child for reduced rate.





Attendance Procedures:

For everyone's safety, when dropping off, please park in a parking spot. **DO NOT PARK ALONG THE CURB!**

- Once in the building, your child must scan his/her membership ID card at the front desk. Parents need to scan their parent security key card at the front desk. If you are new to our program, we will provide you with a security key card and your child's ID card as soon as possible.
- All parents need a security key card to enter classrooms. Each security key card requires a deposit of ten dollars. Key cards may be purchased in the Early Childhood office. Every adult dropping off/picking up your child **MUST** have their security key card **DAILY!**
- In the classroom, when signing your child in/out, please specify the time. It is a state requirement!
- If your child is absent, please call to inform us. Any student absent more than 5 days due to illness shall not be re-admitted without a doctor's note.

Late Fee Policy:

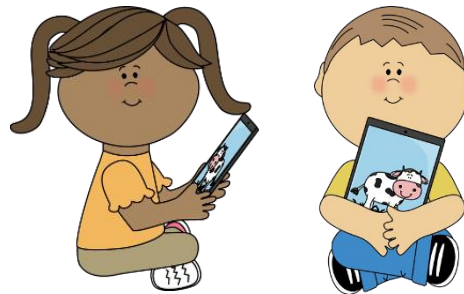
We close at 6:00PM. Pick up after 6PM will result in a late fee of \$1.00 per minute.

- We will use our cell phones as the 'official time'.
- In the event you are late, the late fee **MUST** be paid the following day.
- Unfortunately, your child may not attend our center until payment

School Calendar:

We are open all year long with the exception of the following holidays:

- | | |
|---|--------------------|
| President's Day | Good Friday |
| Memorial Day | Independence Day |
| Last week in June | Christmas/New Year |
| Last week of August / First week of September | |
| Thanksgiving Day & Friday | |
| *Dates Subject to Change | |



Inclement Weather:

Whenever Clifton Public Schools close due to inclement weather, we **ALSO CLOSE**

- We **WILL NOT** notify you by phone
- Any time after 5:30AM you may either log on to WWW.CLIFTON.K12.NJ.US or watch television channels 5, 12, or 77 and look for Clifton Public Schools Closings.

Child's Safety:

It would be preferred for your child to wear sneakers or closed toe shoes with straps. For safety reasons, no sandals or flip flops!

Toy Policy:

Toys, stuffed animals, hand held electronic games, etc. are not permitted in school. Your cooperation in this matter is greatly appreciated!



Kinderkamp:

- 8 week summer program
- Hours are 8:00AM-5:30PM
- Weekly field trip
- Swimming

If you have any further questions please feel free to call us at (973)-773-2697 Ext: 143. We will be glad to help you! Open Door Policy - We are here to speak to you in regards to your child at any time!

