

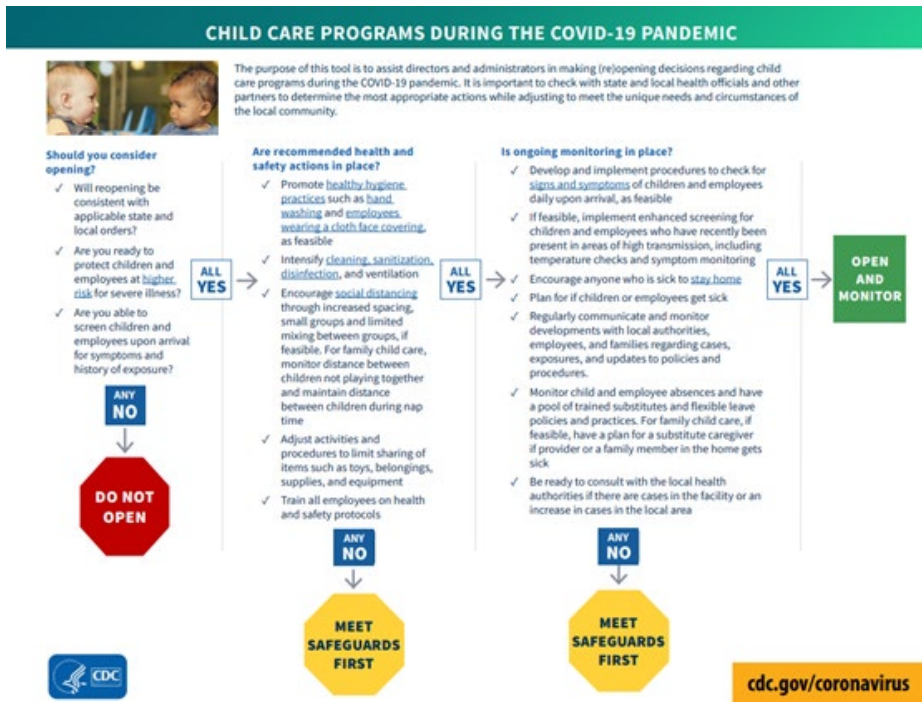
## New Jersey Department of Health COVID-19 Public Health Recommendations for Reopening Childcare

Updated November 20, 2020

Effective June 15, 2020, pursuant to Executive [Order No. 149](#) and [Executive Directive no. 20-032](#) all child care programs operating in the State of New Jersey must comply with the requirements detailed in [Guidance for New Jersey Child Care Facilities On COVID-19 Related Health and Safety Requirements](#) set forth by the New Jersey Department of Children and Families (DCF). This guidance document outlines COVID-19 public health recommendations for the childcare setting. As this situation is evolving, these recommendations are subject to change as more information is learned about this novel virus. Please check the [NJDOH COVID-19 Information for Schools](#) webpage frequently for updated guidance.

Reopening childcare requires everyone to move forward together by practicing social distancing, wearing masks, and performing everyday preventive actions to reduce the spread of respiratory illness. Everyone also has a role in making sure our communities are as safe as possible to reopen and remain open.

As centers resume operations, they should consider how best to structure services to minimize risk to staff and children in line with the DCF guidelines. CDC's [School and Child Care Programs](#) page provides various resources for recommendations for operating childcare programs in low, moderate, and significant mitigation communities. [CDC's Considerations for Schools](#) have been developed to supplement, **not replace**, any state or local health and safety laws, rules, and regulations with which childcare centers must comply.





## Communication

Childcare centers should develop a plan for infectious disease outbreaks including COVID-19. Staff and families should be informed of policies for ill staff and children including isolation, exclusion and notification of positive cases or outbreaks.

Families should understand what actions they need to take should their child become symptomatic or be exposed to COVID-19 while in childcare.

Designate a staff member to be responsible for responding to COVID-19 concerns. Communicate to staff members the process for contacting the designee.

Establish relationships with local public health officials and identify points of contact.

Create a communication system for staff and families for self-reporting of symptoms and notification of exposures and closures.

## CDC's Guiding Principles to Keep in Mind

*The more people a student or staff member interacts with, and the longer that interaction, the higher the risk of COVID-19 spread. The risk of COVID-19 spread increases in school settings as follows:*

**Lowest Risk:** *Students and teachers engage in virtual-only classes, activities, and events.*

**More Risk:** *Small, in-person classes, activities, and events. Groups of students stay together and with the same teacher throughout/across school days and groups do not mix. Students remain at least 6 feet apart and do not share objects (e.g., hybrid virtual and in-person class structures, or staggered/rotated scheduling to accommodate smaller class sizes).*

**Highest Risk:** *Full sized, in-person classes, activities, and events. Students are not spaced apart, share classroom materials or supplies, and mix between classes and activities.*

## Prepare for Reopening

- Review and update or develop your outbreak response/pandemic plan and share with stakeholders before an outbreak occurs.
- Establish procedures to ensure children and staff who become sick at childcare or arrive at the facility sick are sent home as soon as possible.
- Prepare for the potential of school closures or dismissals.
- Create emergency communication plan and maintain up to date contact information for everyone in your communication chain.
- Plan workshops and trainings to educate staff on prevention measures.
- Continue to monitor current information from health officials.
- Continue to ensure that children are up to date on immunizations.

## *Cleaning and Disinfection*

Child care centers should follow standard procedures for routine cleaning and disinfecting with an [EPA-registered product for use against SARS-CoV-2](#). This means at least daily disinfecting surfaces and objects that are touched often, such as desks, countertops, doorknobs, computer keyboards, hands-on learning items, faucet handles, phones and toys. Information on cleaning and disinfecting your facility can be found at <https://www.cdc.gov/coronavirus/2019-ncov/community/disinfecting-building-facility.html> Increasing the frequency of cleaning when there is an increase in respiratory or other seasonal illnesses is always a recommended prevention and control measure.

- If a sick child has been isolated in your facility, clean and disinfect surfaces in your isolation room or area after the sick child has gone home. More information on cleaning and disinfection can be found in [Guidance for Child Care Programs that Remain Open](#). If a sick child has been isolated in your facility, clean and disinfect surfaces in your isolation room or area after the sick child has gone home.
- If COVID-19 is confirmed in a child or staff member:
  - Close off areas used by the person who is sick.
  - Open outside doors and windows to increase air circulation in the areas.
  - Wait up to 24 hours or as long as possible before you clean or disinfect to allow respiratory droplets to settle before cleaning and disinfecting.
  - Clean and disinfect all areas used by the person who is sick, such as offices, bathrooms, and common areas with an [EPA-registered product for use against SARS-CoV-2](#).
- If more than 7 days have passed since the person who is sick visited or used the facility, additional cleaning and disinfection is not necessary. Continue routine cleaning and disinfection.

## *Symptom Screening*

Child care centers are required to follow [screening](#) and admittance requirements for children and staff as outlined in the [Guidance for New Jersey Child Care Facilities On COVID-19 Related Health and Safety Requirements](#).

Parents/caregivers should be strongly encouraged to monitor their children for signs of illness every day as they are the front line for assessing illness in their children. Children and staff who are sick should **not** attend child care. Centers are encouraged to strictly enforce exclusion criteria for both children and staff.

Centers should provide clear and accessible directions to parents/caregivers and staff for reporting symptoms and reasons for absences.

## *Preparing for Illness*

- Daily reports of staff and student attendance should be closely monitored.
- Designate an area or room away from others to isolate individuals who become ill while at the facility.
  - Ensure there is enough space for multiple people placed at least 6 feet apart.

- Ensure hygiene supplies are available, including a cloth mask, facial tissues, and alcohol-based hand rub.
- Establish procedures for safely transporting anyone who is sick to their home or to a healthcare facility. If you are calling an ambulance or bringing someone to the hospital, try to call first to alert them that the person may have COVID-19.

Be ready to follow CDC guidance on how to [disinfect your building or facility](#) if someone is sick.

## **COVID-19 Symptoms**

While some children and infants have been sick with COVID-19, adults make up most of the known cases to date. [Early research](#) suggests that fewer children than adults with COVID-19 get a fever, cough, or shortness of breath. Few children with COVID-19 have had to be hospitalized. However, severe illness has been reported in children, most often in infants less than a year.

Some children have developed [multisystem inflammatory syndrome \(MIS-C\)](#). Currently, information about this syndrome is limited.

According to the CDC, children do not seem to be at higher risk for getting COVID-19. However, some people, including children with special health care needs, may be at higher risk. Those at increased risk include:

- [Older adults](#)
- People who have serious chronic [medical conditions](#) like:
  - Cancer
  - Chronic kidney disease
  - COPD
  - Immunocompromised state from solid organ transplant
  - Obesity (body mass index of 30 or higher)
  - Serious heart conditions, such as heart failure, coronary artery disease, or cardiomyopathies
  - Sickle cell disease
  - Type 2 diabetes

Signs and symptoms of COVID-19 in children may be similar to those of common viral respiratory infections or other childhood illnesses. The overlap between COVID-19 symptoms and other common illnesses means that many people with symptoms of COVID-19 may actually be ill with something else. This is even more likely in young children, who typically have multiple viral illnesses each year. It is important for pediatric providers to have an appropriate suspicion of COVID-19, but also to continue to consider and test for other diagnoses.

Individuals with COVID-19 have had a wide range of symptoms reported – ranging from mild to severe illness. **There is not a single symptom that is uniquely predictive of a COVID-19 diagnosis. A COVID-19 viral test is needed to confirm if someone has a current infection.** Symptoms may appear 2-14 days after exposure to the virus and include the following:



- Centers should be prepared to provide the following information when consulting public health:
  - The identity of the person with COVID-19 or probable COVID-19 (i.e. staff, child in care, household contact);
  - The date the person with COVID-19 or probable COVID-19 was last in the building;
  - The date the person developed symptoms and/or tested positive;
  - Types of interactions the person may have had with other persons in the building or in other locations;
  - Names, addresses, and telephone numbers for ill person’s [close contacts](#) in the school;
  - Any other information to assist with the determination of next steps;
  - If other persons in the childcare program have developed any symptoms; and
  - Any other information to assist with the determination of next steps.

**Individuals with Suspected or Confirmed COVID-19:**

- Children and staff who are COVID-19 **positive** or who have symptoms consistent with COVID-19 and have **not had a medical evaluation or COVID-19 test** must not return until they have met the criteria for discontinuing home isolation (see table below).
  - Individuals with COVID-19 compatible symptoms should be excluded until they have a negative COVID-19 test. Alternate diagnosis should not be accepted for return to childcare/work.
- The other individuals of the small group/cohort of the symptomatic person should also be sent home. These contacts should be instructed to quarantine and may return:
  - If the ill person tests positive - after 14 days from the last exposure and no symptoms develop.
  - After the ill person tests negative.

Individuals who:	Should stay home and away from others until:
Have <b>symptoms of COVID-19 AND</b> <ul style="list-style-type: none"> <li>• <b>have tested positive</b> (by PCR, rapid molecular or antigen testing) <b>OR</b></li> <li>• <b>have not been tested</b> (i.e. monitoring for symptoms at home) *</li> </ul>	<ul style="list-style-type: none"> <li>• At least 10 days have passed since their symptoms first appeared <b>AND</b></li> <li>• They have had no fever for at least 24 hours (one full day without the use of medicine that reduces fever) <b>AND</b></li> <li>• Symptoms have improved (e.g. cough, shortness of breath)</li> </ul>
Have <b>NO symptoms and have tested positive</b>	<ul style="list-style-type: none"> <li>• 10 days have passed from the collection date of their positive COVID-19 diagnostic test <b>AND</b> they have not developed symptoms.</li> </ul>
Have <b>symptoms and have tested negative</b>	24 hours after their fever has ended without the use of fever reducing

	medications and other symptoms improve.
Are identified as a <a href="#">close contact</a> of a <b>case</b>	<ul style="list-style-type: none"> <li>Self-quarantine and monitor for symptoms for 14 days from the last date of exposure with the <b>case</b>, even if the <a href="#">close contact</a> tested negative.</li> </ul>

- If a case of COVID-19 infection occurs in **one defined group** (see note) within the center, the ill person should be sent home.
  - Other staff and children in the group would be considered [close contacts](#) of that case and must be quarantined in their homes for 14 days.
  - Public health, parents/guardians, and staff facility-wide should be informed of the situation.
  - The CDC guidance for cleaning and disinfection should be followed.
- Other groups within the childcare facility can continue to function, with daily and vigilant screening for illness occurring, and social distancing, personal and environmental hygiene measures strictly adhered to.
- If cases occur in **multiple groups** within the facility, then all childcare operations within the facility need to be suspended (see Closure section).
- **The ability to keep groups small and static can be helpful in identifying [close contacts](#) and may aid in determining if a facility wide closure is necessary.**

**Note:** Per DCF requirements, classes shall include the same group of children each day, to the greatest extent possible, and, also to the greatest extent possible, the same staff shall be assigned to care for each group, each day.

**Outbreaks** An outbreak in school settings is defined as two or more laboratory-confirmed COVID-19 cases among students or staff with onsets within a 14-day period, who are epidemiologically linked<sup>1</sup>, do not share a household, and were not identified as [close contacts](#) of each other in another setting during standard case investigation or contact tracing.

**Contact Tracing** Childcare staff should help in identifying [close contacts](#) of positive COVID-19 cases. This should be done in conjunction with the LHD. Contact tracing is a strategy used to determine the source of an infection and how it is spreading. Finding people who are [close contacts](#) to a person who has tested positive for COVID-19, and therefore at higher risk of becoming infected themselves, can help prevent further spread of the virus.

**Travel** Travel outside of New Jersey may result tin mandatory quarantining. [www.state.nj.us/health/cd/documents/topics/NCOV/TravelRestrictions.pdf](http://www.state.nj.us/health/cd/documents/topics/NCOV/TravelRestrictions.pdf)

<sup>1</sup> Health departments should verify to the best extent possible that cases were present in the same setting during the same time period (e.g., same classroom, school event, school-based extracurricular activity, school transportation) within 14 days prior to onset date (if symptomatic) or specimen collection date for the first specimen that tested positive (if asymptomatic or onset date is unknown) and that there is no other more likely source of exposure (e.g., household or [close contact](#) to a confirmed case outside of educational setting).

---

*Close contact is defined as being within 6 feet of someone with suspected or known COVID-19 for 15 or more minutes during a 24-hour period. In some school situations, it may be difficult to determine whether individuals have met this criterion and an entire cohort, classroom, or other group may need to be considered exposed, particularly if people have spent time together indoors.*

---

A contact tracing team from the local health department or the NJDOH calls anyone who has tested positive for COVID-19. They ask the patient questions about their activities within a certain timeframe, to help identify anyone they have had close contact. Those contacts might include family members, caregivers, co-workers or health care providers.

Individuals who have recently had a close contact with a person with COVID-19 should [stay home and monitor their health](#).

### **Closure**

- A center may need to temporarily dismiss children and staff for 2-5 days, if a child or staff member attended childcare before being confirmed as having COVID-19.
  - This initial short-term dismissal allows time for the local health officials to gain a better understanding of the COVID-19 situation impacting the facility, perform contact tracing and cleaning and disinfecting the facility.
  - Centers should follow CDC guidance on how to [clean and disinfect](#) your building if someone is sick.
- Centers should work with the [local health officials](#) to determine appropriate next steps, including whether an extended dismissal duration is needed to stop or slow further spread of COVID-19.

### **Testing**

NJDOH recommends that facilities work with their local health departments to identify rapid viral testing options in their community for the testing of symptomatic individuals. CDC has information on types of [COVID-19 tests](#) currently available to diagnose current infection. Having access to [rapid COVID-19 testing for ill children and staff](#) can reduce unnecessary exclusion of ill persons and their contacts and minimize unnecessary disruptions of childcare and the educational process.

Until more evidence about protective immunity is available, serologic test results should not be used to make decisions:

- Regarding the need for personal protective equipment.
- To discontinue social distancing measures.





- About grouping persons residing in or being admitted to congregate settings, such as childcare, schools, dormitories, or correctional facilities.
- About returning persons to the workplace.

### ***COVID-19 Resources***

[NJDCF COVID-19 Resources for Licensed Childcare Centers](#)

[CDC Childcare Schools and Youth Programs](#)

[CDC Schools and Day Camps](#)

[CDC Considerations for Youth Sports](#)

[NJDOH COVID Information for Schools](#)

[CDC Cleaning and Disinfecting Your Facility](#)

[CDC Information on Cleaning School Buses](#)

[AAP Guidance Related to Childcare During COVID-19](#)

[NJDOH General Guidelines for the Prevention and Control of Outbreaks in School Settings](#)

[People of Any Age with Underlying Medical Conditions](#)